



Slingshot Shift Knob Adapter



This shift knob adapter for the Slingshot allows for the use of any shift knob with a M10 X 1.25 thread, like the DDMWorks shift knob.

Installation time of the shift knob adapter depends on you and your mechanical skills. It is suggested that you read through the directions a few times to familiarize yourself with the

components of the kit, and your car.

If you are pretty handy with tools the shifter can be installed in 30 minutes, however we suggest that you schedule at least a couple of hours for the installation.

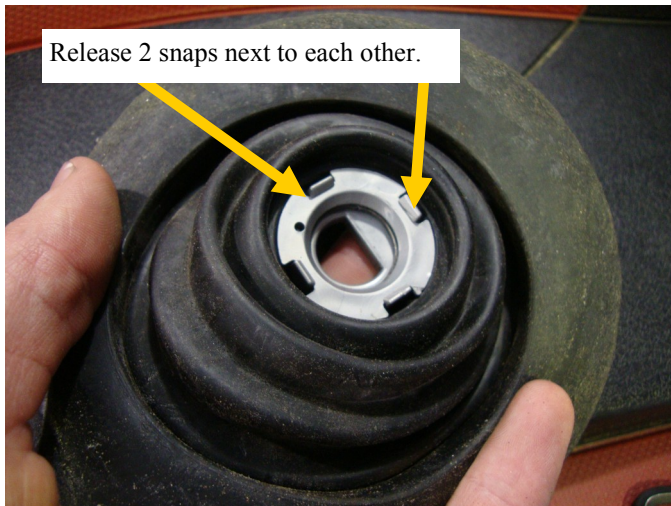
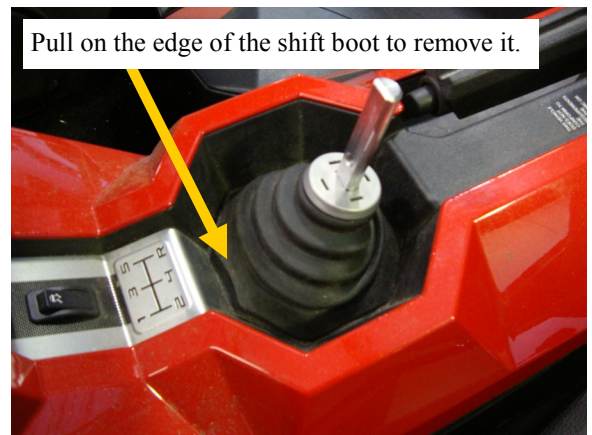
TOOLS NEEDED

TOOLS NEEDED
5mm Allen Key
Flathead screwdriver

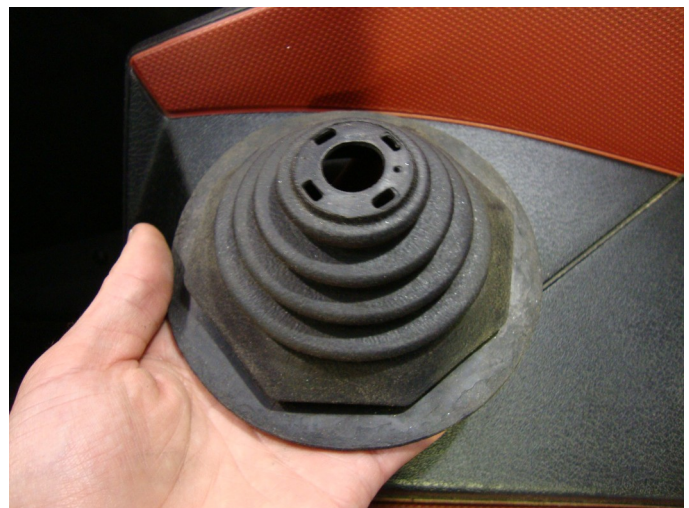


Removing the Stock Shifter Knob

1. **Make sure your Slingshot is in neutral and the parking brake is on before starting installation.**
2. The first step of the installation is to remove the stock shift knob. At the bottom of the shift knob on the front there is a 5mm allen head cap screw. Using the 5mm allen wrench remove this bolt and lift the shifter off.
3. The next step is to remove the stock shift boot. Pull upwards at the base of the shift boot to loosen it from the plastic trim. Once it is off the trim, it can be pulled off.
4. The silver plastic ring needs to be removed from the shift boot. On the underside you can see 4 places where the top plastic piece snaps onto the bottom. Using your hand or a screw driver lightly push two of the snaps next to each other back to release the snaps so the two pieces of plastic trim can be separated from the shift boot.

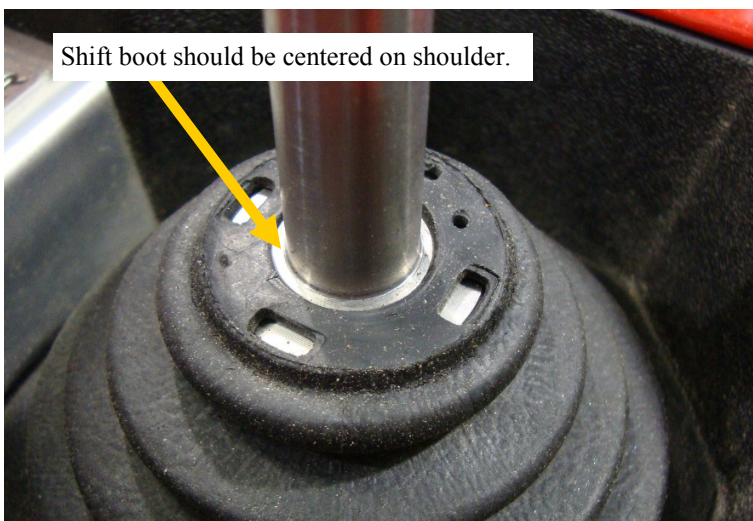


5. Once the trim is removed the shift boot will look like this. Next you begin to install the new shift adapter.



Installing the DDMWorks shift adapter

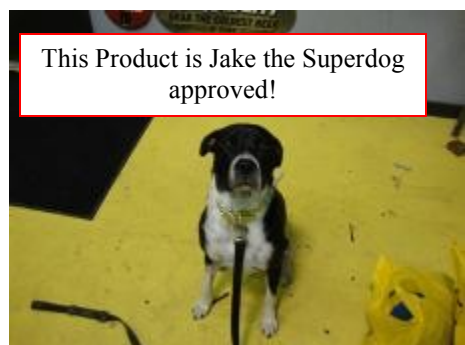
1. To start installing the shift adapter place the inner long shaft onto the shaft sticking out of the transmission, and tighten the 5mm set screw.
2. Next the shift boot needs to be re-installed on the car. Push the outside of the boot between the hole in the trim and the transmission to get the outside of the boot in place. For the center of the boot make sure that the hole is centered on the small shoulder on the shaft of the adapter.
3. The outer sleeve for the shift adapter can then be slid over the inner shaft.
4. The final step of the installation is to thread on your M10 X 1.25 shift knob.



Congratulations! You have finished the install. All of us here at DDMWorks thank you for your purchase and hope you enjoy your new shift adapter.

If you have any questions feel free to give us a call or text us at 864-907-6004. You can also email us at Tech@ddmworks.com.

Also, Follow us on Facebook for the latest product and information releases!



DDMWorks

119-A Hwy 183
Piedmont, SC 29673

Tech Support
(864) 907-6004

Automotive Performance Specialists