



## Slingshot Front Splitter DDM-part number

The DDMWorks Front Splitter for the Polaris Slingshot is designed to add style and function to the factory front bumper.



If you are pretty handy with tools the Front Splitter can be installed in about one hour, however we suggest that you schedule at least a couple hours for the installation.

If you have any questions during the installation you can call or text (864) 907-6004 or email us at [Tech@ddmworks.com](mailto:Tech@ddmworks.com).

TOOLS NEEDED	QTY	PART DESCRIPTION
4mm, 5mm Allen	1	ABS Splitter
10mm wrench	1	Stainless Air Diverter
Drill and Drill Bits 6mm 6.5mm	2	Up right Brackets
Jack and Jack Stands.	2	End Clamps
<b>Make sure your slingshot is parked on a solid, flat, and level surface with the parking brake engaged.</b>	1	Hardware Packet

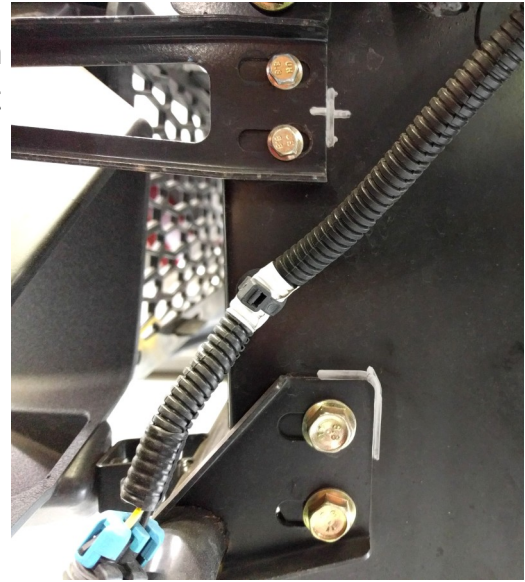


119-A Hwy 183  
Piedmont, SC 29673

**Tech Support**

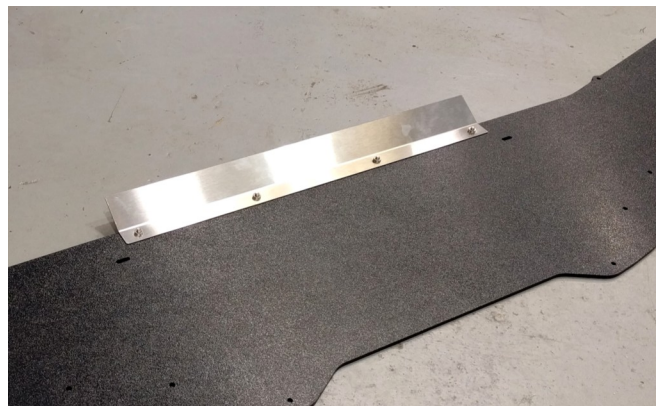
## Slingshot Front Splitter Installation

1. Make sure you have a flat and level surface to work on. There are Two ways the splitter can be installed. With the Front Bumper ON the Slingshot or with the Front Bumper OFF the Slingshot. For these Instructions we removed the front bumper so it will be easier to see some of the steps.
2. On a flat, level surface jack the front of the slingshot up high enough to get under the front bumper. Support both the left and right sides with Jack Stands so it is safe and secure.
3. With the Slingshot up on Jack Stands you can now choose to keep the front end on or take it off. If you choose to remove the front bumper Mark the brackets locations and remove the 4 bolts on each side.



## Splitter assembly

1. Attaching the Air Diverter. Using 4 of the M6x16 button head bolts and 4 of the M6 washers the Air Diverter attaches to the top of the Splitter at the back. There are 4 holes predrilled in the ABS Splitter. With the Diverter on the top insert the bolts with washers on them up through the bottom and into the captive fasteners in the Diverter.



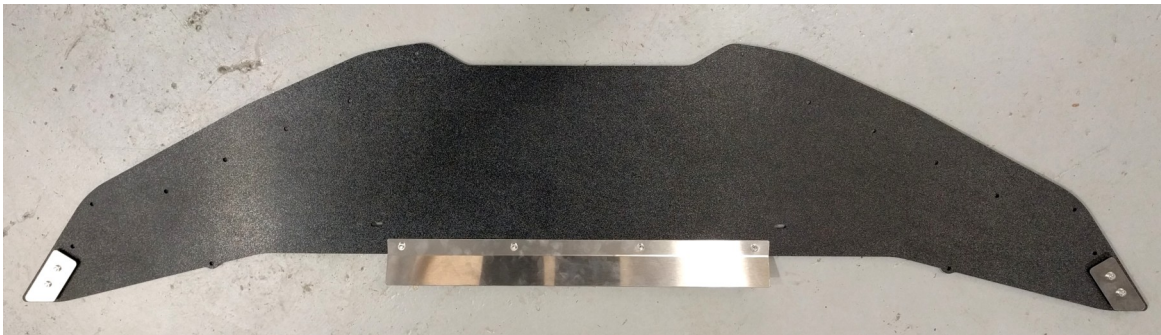
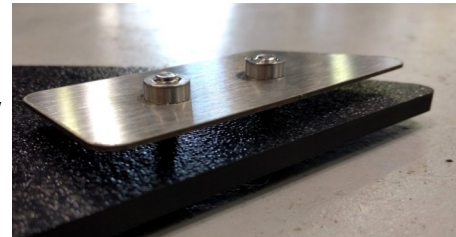
## Slingshot Front Splitter Installation

2. Attaching the End Clamps. In your kit there are 2 End Clamps. These are side specific so make sure they are on the correct side of the splitter and line up with the edges as shown in the photo.

On one end of the splitter use two of the M6x20 button head bolts and two of the M6 washers, insert the bolts with washers up through the bottom into the captive fasteners of the end clamps. Thread the bolts in until the bolt just starts to poke through the back side of the captive fastener. We need to leave some space between the splitter and the clamp for the front bumper to slide in between.

Repeat this process on the other side of the splitter.

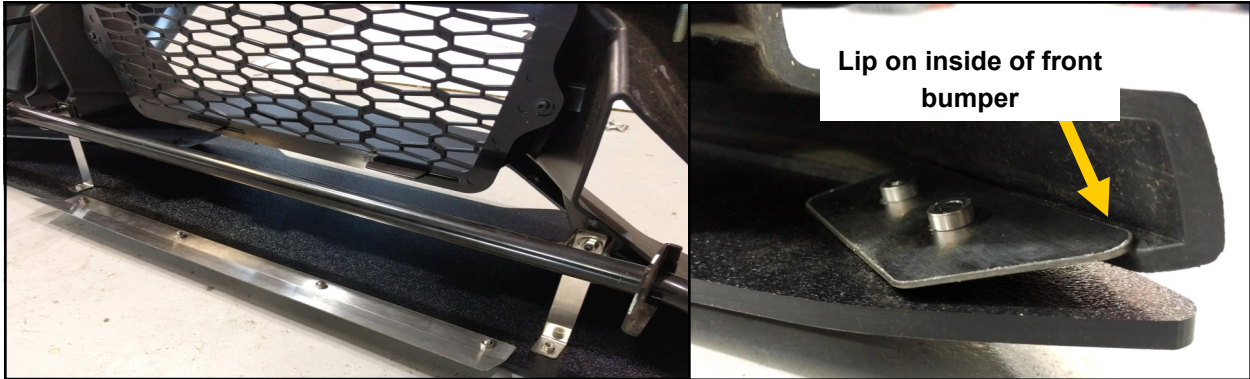
At this point the splitter should look like the photo below with the Air Diverter and two end clamps attached.



3. Attaching the Up Right Brackets. In your kit you will find two up right brackets. These attach to the back side of the front bumper using existing bolts and hardware from your kit. On the front bumper support bar, just inside of the mounting tabs, you will see a mount on each side. The new upright brackets slip into place with the 90 degree bend facing down as shown in the photo. Using two nuts and two washers from your kit loosely attach the brackets to the factory bolt sticking through the front bumper. These may need adjusted before tightening down completely.



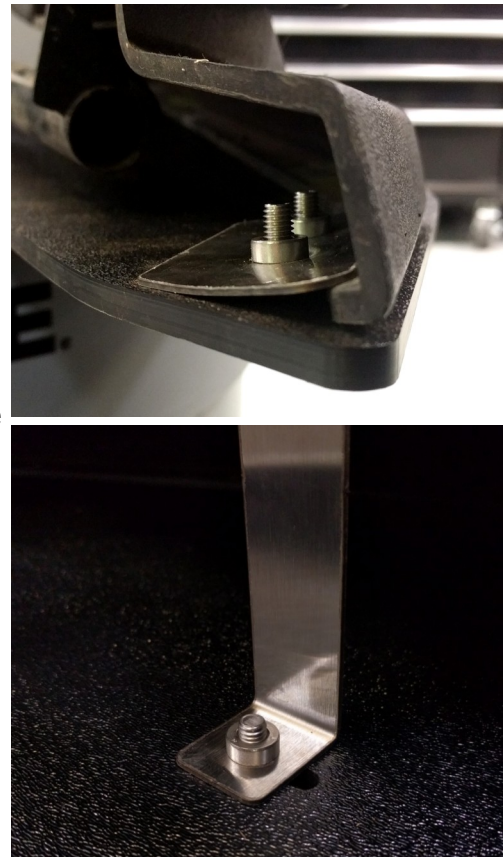
## Slingshot Front Splitter Installation



4. With all of the brackets and diverter attached you can now slide your splitter in place from behind the bumper working it towards the front. The end clamps will need to be lifted and guided into place catching the lip on the inside of the front bumper as shown above.

5. When you have the splitter lined up tighten the end clamps down using a 4mm allen wrench. Make sure the clamps catch the lip on the insides of the bumper when tightening.

6. Next, using two M6x16 bolts and two washers, insert the bolt with washer up from underneath the splitter into the captive fastener on the bottom of the up right brackets. You may have to wiggle these around slightly to get them to line up. This is why we left the nuts on top slightly loose. So once you get the bottom in and tightened down, tighten the nut on the top of the bracket.



## Slingshot Front Splitter Installation

7. On the bottom of the splitter along the front edge you will see 4 holes on each side that line up with the front lip of the bumper.

In the kit there are two screws that will be used to locate and secure the splitter to the bumper.

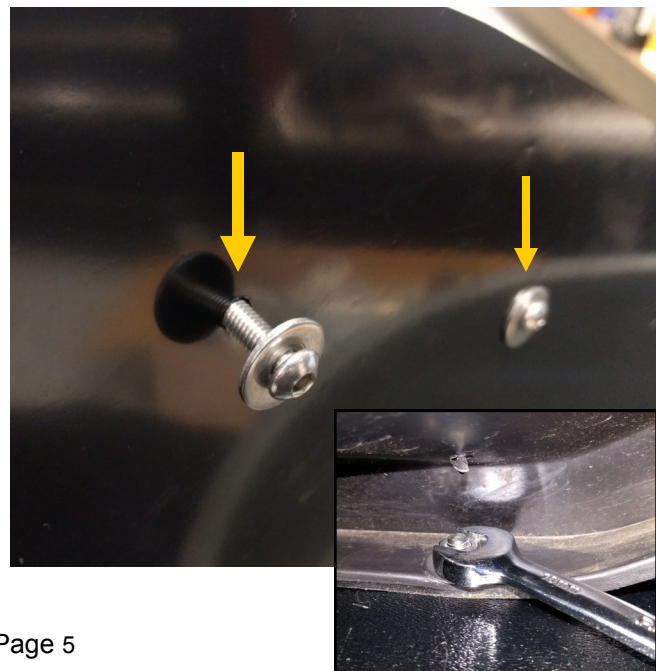
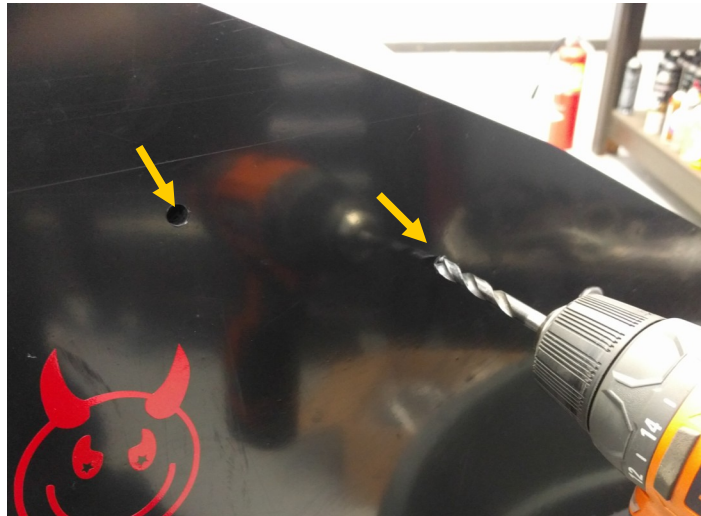
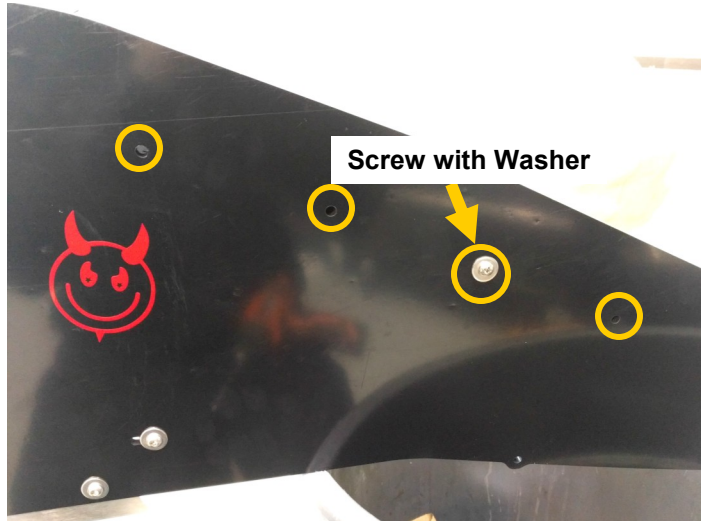
With one of the screws and a M6 washer, locate the second hole in from the edge and drive that screw with washer through that second hole and into the bumper. Repeat on the other side of the splitter.

This will hold the splitter tight to the bumper for the next step.

8. The remaining three holes on each side will be drilled out using a 6.5mm drill bit. Using a drill and the 6.5mm drill bit, insert your drill bit into the holes in the splitter and drill through the lip in the front bumper.

When you have all 6 of the remaining holes drilled out locate the M6x20 button head bolts, M6 washers, and M6 nuts in your hardware packet.

Insert a bolt with a washer on it up through the bottom of each of the 6 holes following each one with a washer and nut on the inside of the bumper lip. This will sandwich the splitter to the bumper and create a strong front edge. Using a 10mm wrench hold the nut on the inside of the bumper and tighten the bolt with a 4mm allen wrench.



## Slingshot Front Splitter Installation

9. On the back edge of the splitter near the outer points there is a hole that we will now use to connect the back of the splitter to the front bumper bar.

In your hardware pack there are two Loop Clamps, two nylon spacers, two Blue M6x30 bolts, two large washers, two small washers, and two nuts. One of each for each side of the splitter.

As shown in the photo, The Loop Clamp loops over the bumper support bar with the tab on the bottom and facing the back of the splitter. The Blue bolt gets the larger washer placed over it before being inserted up through the bottom of the splitter than through the nylon spacer. The bolt then goes through the Loop Clamp followed by the smaller washer and finally the nut.



Tighten this assembly down hand tight. Repeat this process on the other side.

10. In your kit you have 4 splitter front supports.

The splitter has holes drilled in it already for the base of the support rods, but you will have to drill holes in your bumper to attach the top half of the rods.

Insert the bottom of the rods into the splitter and loosely tighten them so they can still move around a little.

With the bottoms of the rods in you can use the tops of the rods and arching them back and forth on the bumper use a pencil to mark the approximate location to drill your 6mm hole. You will want to drill the actual hole just slightly higher than your mark to account for the angle of the rods. Do this with all 4 of the rods and once they are all in place put the washers and nuts on and tighten them down.



## Slingshot Front Splitter Installation

With all 4 of the front support rods on and tight the Splitter is installed !! If you took the front bumper off of the slingshot you can now put it back on using the marks you made to line it back up to where it was before.



Congratulations! You have successfully installed your new Front Splitter!



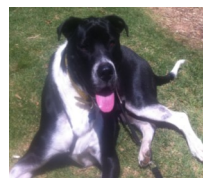
119-A Hwy 183

Piedmont, SC 29673

### Tech Support

(864) 907-6004 (call or text)

Email: Tech@DDMWorks.com



This product is  
Jake the  
Supercharger  
Dog  
Approved!

