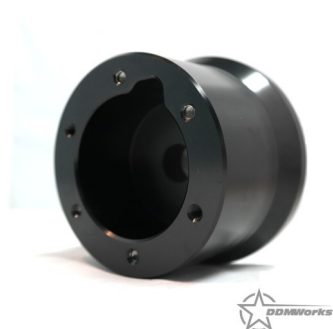




Steering Wheel Adapter DDM-15-28



The DDMWorks Slingshot Steering Wheel Adapter is specifically designed to install aftermarket steering wheels onto the Slingshot. The unique design creates an OEM looking installation.

If you are pretty handy with tools the steering wheel adapter can be installed in about an hour, however we suggest that you schedule at least a few hours for the installation.

If you have any questions during the installation you can call or text (864) 907-6004 or email us at Tech@ddmworks.com.

TOOLS NEEDED		QTY	PART DESCRIPTION
24mm socket		1	Steering Wheel Adapter
1/2 inch ratchet wrench and or breaker bar			
Optional Impact wrench			
Steering Wheel Puller			
Torque wrench			



119-A Hwy 183
Piedmont, SC 29673

Tech Support

(864) 907-6004 (call or text)
Email: Tech@DDMWorks.com



Removing the Stock Steering Wheel

1. The first step is going to be to remove the stock steering wheel. Start by using your fingers or a flat head screwdriver and pull out the horn button assembly. There are plastic barbs on each of the three points and some at the top of the horn button assembly. Use the screw driver to pry up each area with a barb. Once the whole assembly is loose you will have to unplug the horn wires.



2. With the horn button assembly out of the way you will see the nut holding the steering wheel onto the steering shaft. Use a 24mm socket to remove the nut.

***** Before you pull the steering wheel off make sure your front wheels and the steering wheel are straight !! The steering shaft and hub adapter have 40 small teeth so you want to try to get it as straight as you can.**



In some cases the steering wheel will pull off just using your hands. Most of the time though, a steering wheel puller is necessary. Steering wheel pullers are available online through several sources, including Slingmods.com.



Removing the Stock Steering Wheel—continued

3. With the wheels all straight and the wheel loose, be very careful and gently pull the steering wheel off. Guide the horn wires through the hole in the top of the steering wheel.

You are now looking at the clock spring.

DO NOT ROTATE the clock spring. Keep it straight up just as it looks when you remove the wheel. You can even use a piece of tape to temporarily hold the clock spring and stop it from spinning. Just to be safe.



Installing new steering wheel adapter

1. With the stock steering wheel removed, you are now ready to install your new **DDMWorks** Steering Wheel Adapter.
2. If you used tape to hold the clock spring in place remove it now.
3. With the wide end toward the clock spring and the hole at the top for the wires, slide the new adapter onto the steering shaft guide the horn wires through the hole in the top of the adapter just like it was on your stock wheel. **DO NOT lock the hub down tight just yet.** Put the nut on only a few turns with your fingers.
4. Bolt your steering wheel onto the adapter. Do not tighten all the way. Check to see if you have the adapter on the steering shaft in the correct position.
5. If it is not lined up correctly remove the nut and adjust by pulling the new wheel and hub off and rotating a tooth or two in the correct direction. Putting a small mark on the hub adapter with a paint pen will allow you to see how much you have moved the adapter.
6. Put the nut back on finger tight and check again, repeat as necessary until the steering wheel is straight.
7. Once you are sure your new adapter and steering wheel are straight with your front wheels you can tighten the 24mm nut down to **32 ft. lbs.**



Steering Wheel Adapter Installation

8. With the Adapter torqued down to the steering shaft you can complete the installation of your new aftermarket steering wheel. Make sure to reconnect your horn wires and test it to make sure the horn works properly.

Congratulations! You have successfully installed your new Steering Wheel Adapter and steering wheel!

If you have any questions or comments, let us know. Send an email to Sales@DDMWorks.com or give us a call—864-438-4949.



119-A Hwy 183

Piedmont, SC 29673

Tech Support

(864) 907-6004 (call or text)

Email: Tech@DDMWorks.com